



2005 Lyman-Morse

38' Monhegan - Skylark

Must see! SKYLARK is an exceptionally well maintained 2005 Lyman-Morse Monhegan 38 model designed by the team of Chuck Paine & Mark Fitzgerald, she was built in 2005 by Lyman-Morse Boatbuilding in Thomaston, Maine.

- Power - Used - Downeast
- Diesel Fuel
- Fiberglass Hull
- Newport Rhode Island United States

🚩 Flag of Registry: United States

Vessel ID# 2786003

\$385,000 USD
€357,491 Euros \$519,782 CAD

Description

SKYLARK is an exceptionally well maintained 2005 Lyman-Morse Monhegan 38 model designed by the team of Chuck Paine & Mark Fitzgerald, she was built in 2005 by Lyman-Morse Boatbuilding in Thomaston, Maine of composite constructed hull of scrim infused E-glass. With a graceful sedan profile, SKYLARK has an overall length of 38' 4" (35'7" at the waterline), a beam of 12.2" with a draft of 2'3". Well-designed and continuously maintained & upgraded throughout, she is equipped with a 500 horsepower / 2900 rpm Yanmar 6CX-6TE2

inboard engine (rebuilt in 2018), and with Twin Disc M65075 1.01:1 power transmission, Hamilton 362 Jet Drive propulsion and a Maxwell 1500 windlass. Her Northern Lights 5 kw generator was rebuilt in 2017, side Power SP55s Bow Thruster in 2015, Hamilton Jet thrust bearing and seals (2015). SKYLARK has a fuel capacity of 170 gallons and carries 90 gallons of freshwater & the interior is fully air conditioned with a 12K Marine Air Vector Compact AC system. In 2019 the deck received fresh Awlgrip deck (#H8139 Oyster White) capped with varnished custom mahogany toe rails. A bow-rail was added in 2013 to compliment her sheer. A new stereo system was installed in 2019 and the electronics were all upgraded in 2018 / 2019: Garmin GPSMAP 8617 Chart Plotter (2018), Garmin GRM Fantom 4' Open Array (2018), Garmin DST800 Triducer (2019), Garmin GMI20 Instrument Display (2019), Icom VHF Marine IC-M602 & ACR Spotlight.

The glass and canvas enclosed pilothouse has been recently stripped to bare wood and completely re-varnished. There is an inviting L-shaped settee and sloping side windows that are framed in varnished mahogany and fitted with custom shades. A well-designed helm station has twin Stidd Systems ergonomic helm seats and with well positioned overhead hatches for increased airflow.

Aft of the pilothouse is an aft facing settee with storage underneath and sturdy varnished transom doors open to a teak swim platform. Three large hatches offer to access the lazarette and jet.

The windlass and anchor are mounted on a varnished teak bowsprit and the lines run in through graceful custom chocks. The cabin house is fitted with a full-size custom sun-cushion and all deck fills and drains are flush. All electronics, horn and lights are mounted on the hardtop.

From the pilothouse a sliding companionway door disappears into the bulkhead, and 3 steps lead down to the salon where to port is the settee with a maple & mahogany table with folding sides. Opposite is the galley and immediately to starboard is the bathroom with electric Tecma head, vanity, and a large shower. The classic interior has teak & holly sole, overheads of gloss white v-groove panel with mahogany battens and mahogany cabinets throughout. Both the galley and bathroom have granite countertops, and the galley is outfitted with custom storage for dishes & barware, etc. a stainless-steel sink, a Princess three-burner gas stove, Frigoboat fridge and Sharp microwave.

Forward is the cozy owner's suite with a very comfortable centerline queen and lots of storage drawers and hanging lockers. The ports and hatch have blackout covers and there is a television with KVH satellite TV connection.

SKYLARK is currently lying Warwick, Rhode Island – a short drive from Newport and just minutes from the TF Green Airport (PVD).

All details offered in good faith.

Data Sheet

Category: Downeast

Type: Power - Used

Year: 2005

Beam: 12' 2"

LOA: 38' 4" (11.68 meters)

LWL: 35' 7"

Draft Max: 2' 3"

Draft Min: 2' 3"

Cabins: 1

Heads: 1

Maximum Speed: 18

Cruise Speed: 15

Fuel Type: Diesel

Hull Material: Fiberglass

Air Conditioning: Yes

Displacement: 25000 lbs

Fuel Tank: 350 Gallons (1324.89 Liters)

Fresh Water: 90 Gallons (340.69 Liters)

Holding Tank: 25 Gallons (94.64 Liters)

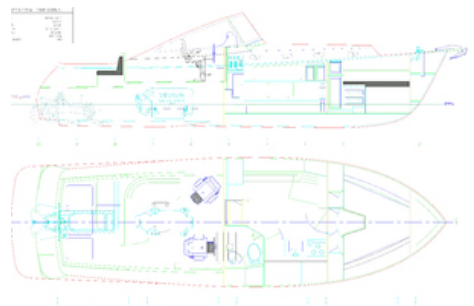
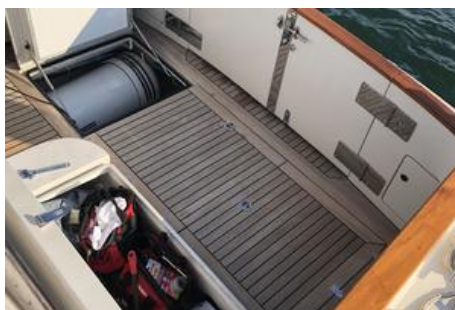
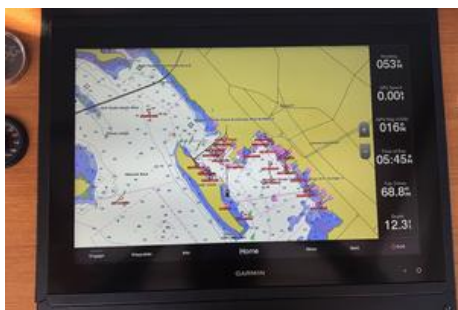
Builder: Lyman Morse

HIN/IMO: MJEP3805E505

Featured Images







Engines

Engine 1

- Engine Make: Yanmar
- Engine Model: 6CX-GTE2
- Engine Type: Inboard
- Power HP: 500.00
- Power KW: 0.00
- Fuel Type: Diesel

Generators

Generator 1

- Generator Make: Northern Lights
- Generator KW: 5.00
- Generator RPM: 0.00
- Generator Hours: 0.00

Full Details

Manufacturer's Description

Skylark has had enough major work done recently to ask whether she is better now than when new. In 2018, her engine was removed and completely rebuilt, and engine room painted. Her hull was freshly painted. The electronics have been upgraded with a new Garmin large touch screen. Her canvas was replaced. Brand new batteries installed in April 2021. The list goes on.

Aft Deck

Stepping onto the teak swim platform you are met with two large varnish teak veneered transom doors that swing in. They amazing stout doors that easily hinge open and lock into a perfectly placed magnet. The aft deck has 2-to-3-person settee with line and gear storage underneath. The deck has three large hatches to access the lazarette and jet.

Deck

Skylark has an Awl-gripped deck capped with varnished custom mahogany toe rails. The owners added a bow rail which follows the shear of the vessel. The windlass and anchor are mounted on a stout varnish teak bowsprit.

Lines run in through elegant custom chocks. The hardtop carries all the electronics, lights, and horn. The cabin house has a full-size custom cushion for sunbathing and naps. Deck fills are flush port and starboard, as are the deck drains.

Dinghy Storage

The custom wide transom opening allows a dinghy to be pulled on deck. There is a fixed roller on the center of the platform. The next roller is removable and drops into two flush sockets hidden when the doors are closed. You pull the dinghy aboard with a clever light weight block and tackle that mounts in the aft deck settee. Again, when not in use it hides in the ample storage under the settee and the cushions cover the mounting hardware.

Pilothouse

The sedan styling is completely enclosed with glass and canvas. The side windows slope down capped by varnished mahogany and custom fit enclosure with built in shades fills the rest of the sides and aft end. The "L" shape settee is complimented by the new (2015) cranberry fabric cushions. The helm station is not only a work of art, it is just flat out comfortable. Cruising on Skylark could not have be easier or more enjoyable. Both Stidd seats (new 2014) have hatches overhead for controlled air flow. There are shades on all the windows to keep you out of the tropical sun, Skylark makes it fun and easy to cruise and enjoy being on the water.

Main Cabin

The companionway is spacious and clean. The pocket door rolls into the bulkhead and the slider hides away right next to it. Walking down the three steps the head is immediately to your right. The salon settee is to port with the galley opposite. The interior is very classic with high gloss "V" groove paneled overhead with varnished mahogany battens. The sole is satin teak and holly and raised panel mahogany cabinetry. The black granite with large mica flecks in the galley and teal suede cushions on the settee add a very artistic feel centered around a custom maple and mahogany table. There is more than enough in the galley with custom glass and plate racks. Behind the settee is a full-length book shelf. The aft end is perfectly laid out with the electrical panel and hideaway custom wine and liquor storage.

Master's Cabin

Walking into the master's suite forward your eyes are immediately drawn to the rose carvings. They really are the heart of this boat, so elegant and classic. The cabin is small yes, but even big guys will be comfortable. The cabin be closed off by a gorgeous custom bi-fold door. There is an ample number of drawers with port and starboard hanging lockers. Some of the finer details to this cabin are the covers made for the portlights and hatch that block out 100% of the light and sleeping under the "million" thread count sheets. You will never want to get up.

Head

Just like the rest of the boat the head is beautiful. And just like the rest of the boat perfectly functional. Designed with a shower there is no curtain needed. Everything is high gloss, sealed and protected. The raw teak grate and portlight carries the nautical theme around the modern Tecma electric head.

Hull and Deck Hull Material

Scrimp infused E-Glass hull

- Epoxy based vinyl ester resin #8084 (Derakane product)
- Corecell coring system
- Closed cell foam

Deck Material

Hand laid E-Glass system; Reinforced through core vacuum bagging

- Vinyl ester resin #441-800 (Derakane product)
- Corecell coring system
- Closed cell foam

Exterior Coatings

Skylark had her hull and non-skid paint (Spring 2019)

- Topsides: Awl Grip #H7247 Beaujalais Red; Clear Coated
- Boot Stripe: Awl Grip #G8044 Snow White
- Cove Stripe: Awl Grip #H9178 Cordovan Gold
- Bottom Paint: Interlux Black
- Deck: Awl Grip #H8139 Oyster White
- Windshield: Awl Grip 50% Oyster White/ 50% Graystone #GI040
- Non-Skid: Awl Grip 50% Oyster White/ 50% Graystone
- Jets: Interlux/ Trilux Prop & Drive Black
- Fins & Trim Tabs: Ocean Max Prop Speed

Electronics

- Garmin GPSMAP 8617 Chart Plotter 2018
- Garmin GRM Phantom 4' Open Array 2018
- Garmin DST800 Triducer 2019
- Garmin GMI20 Instrument Display 2019
- Icom VHF Marine IC-M602
- ACR Spotlight

Systems

- Fresh Water System
- Mach 5 Head Hunter Pump
- 12 gal. Atlantic Marine "T" Series Water Heater

Electrical System

- Meridian Marine AGM Batteries; Starting and House Bank
- 12/2000 Inverter
- 12V. Mastervolt Charger

Engine & Gear

- Yanmar 6CX-6TE2 (Fully rebuilt 2018) 500 H.P. @2900 R.P.M.
- Approximately 200 hours (to be confirmed)
- Twin Disc M65075 1.01:1
- Jet Drive - Hamilton 362 Jet
- Generator - Northern Lights 5 kw
- Windlass- Maxwell 1500
- Bow Thruster - Side Power SP55s
- Propane - (2) 101b. Cylinders
- Toilet - Headhunter
- Refrigeration - Frigoboat refrigerator
- Air Conditioning - 12k Marine Air Vector Compact System

Owner Additions

2021: New house batteries
 2018: Completely Rebuild Main Engine. 2016: New custom pilot house cushions
 2015: New Hamilton Jet thrust bearing and seals 2015: New bow thruster motor
 2014: New Stidd seats
 2014: Installed new Arid Bilge system 2013: New batteries
 2013: New stereo

2013: New AIS

2011: Built custom bow rail

Service statement by Lyman-Morse:

"Skylark was built by Lyman-Morse and has been under her service program ever since. We are as detailed in our preventative maintenance as we are with the fit and finish of our cabinetry. We have been lucky to have owners who choose to put the attention as much towards the systems and functions of this boat as they do the aesthetics. Between annual sea trials and inspections from all departments in our service yard to annual oil samples, battery load tests, coolant system ph and pressure tests, any buyer can be assured they are walking onto a sound vessel that will allow them peace of mind that the only worry they should have is whether they have enough time to truly relax and enjoy all Skylark and the Lyman-Morse family has to offer."

Builder's Notes

"Skylark was launched ANNIE ROSE on a spring day in 2005. This 38' jet boat is nimble and beautiful, complete with all the amenities the couple wanted for coastal cruising. Distinctive in all respects, the design came about after working with Chuck Paine and Mark Fitzgerald of C.W. Paine Yacht Design for several years. With them, we developed a stylish, jet cruiser which would be available from us on a semi-custom basis. The primary focus was to deliver a sea-kindly, fast and dry ride; plus, a beautifully appointed exterior and interior with ample accommodations that could be fully customized."

Spring and Summer 2022 Maintenance

- Bottom job
- Jets removed, sandblasted, serviced, rebuilt, painted
- New sump pump
- New LG microwave
- Autopilot lines & couplings replaced
- All fire extinguishers serviced & re-certified
- All flares replaced with new
- Fuel gauge sensors repaired / replaced / recalibrated

Highlights of 2022-2023 Refit

- New custom stainless-steel tabs, 14" x 36" with 2 actuators per side. New controller and LED Display for console
- Install new FloScan fuel sensor with new Garmin Multifunction Display
- Recalibrate new fuel sensors
- Jet removed, sandblasted & repainted and rebuilt with new O-ring seal
- Fabrication of new, larger stainless steel fins to stabilize steering and tracking
- New window shades & cockpit upholstery professionally cleaned
- New custom stainless-steel fins to increase stabilization, steering and tracking
- Fuel lines replaced
- New bottom paint
- New LG microwave, fire extinguishers serviced, new flares, new sump pump
- All new exterior varnish
- Deep cleaning throughout including all lockers, bilges, etc.

CONTACT BROKER

NICHOLSON
yachts

Nicholson Yachts

56 Bridge Street
2nd Floor West
Newport RI 02840 USA
Phone: 1-401-849-0344
Fax: 1-401-849-9018
<https://nicholsonyachts.com>



Karen Kelly-Shea

Charter Broker
56 Bridge Street
2nd Floor West
Newport RI 02840 USA
Office: 1-401-849-0344
Cell: 401-338-4789
Email: newport@nicholsonyachts.com



© 2023 International Yacht Brokers Association - Karen Kelly-Shea, Active Member - Vessel ID: 2786003