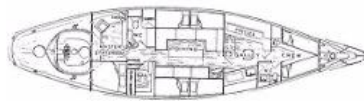


Abeking & Rasmussen Custom Yawl



Make	Model	Length	Price	Year	Condition
Abeking & Rasmussen	Custom Yawl	67 ft	\$ 395,000	1953	Used

Boat Name	Hull Material	Draft	Number of Engines	Fuel Type
Enchanta	Steel	10 ft 6 in	1	Diesel

ENCHANTA is an interesting project boat. The right person, with a love of antique yachts and yachting can restore her to the one-of-a-kind timeless classic she is. ENCHANTA's pedigree is second to none having been built at the peak of the CCA ocean racing design period by Abeking & Rasmussen in Lemwerder, Germany to a design from the Alden office in Boston. She has proven her merit by extensive offshore cruising and an excellent racing record including a Bermuda Race 2nd place. ENCHANTA was built by Dick Steigler who built the A&P stores. He raced her actively with the NYYC. Later ENCHANTA was owned by Jonas Salk, followed by Roman Traver...

Additional Information and Photos

Measurements

Max Speed: 7 kn
LOA: 67 ft
LWL: 51 ft
Length on Deck: 62 ft
Beam: 15 ft 7 in
Max Draft: 10 ft 6 in
Cabin Headroom: 6 ft 3 in
Displacement: 120000 lb
Windlass: Electric Windlass
Electrical Circuit: 110V
Fuel Tanks #: 1
Fuel Tanks Capacity: 960 gal
Fresh Water Tanks #: 1
Fresh Water Tanks Capacity: 450 gal
Fresh Water Tanks Material: Other
Holding Tanks #: 1
Holding Tank Capacity: 25 gal
Holding Tanks Material: Plastic
Number of double berths: 4
Number of twin berths: 2
Number of Cabins: 2
Number of Heads: 2

Propulsion

Engine #1
Engine Make: Detroit
Primary Engines: Inboard
Drive Type: Stern Drive
Hours: unknown
Power: 170 hp
Propeller Type: 3 Blade
Propeller Material: Bronze

Additional Information and Photos

Electronics

Depthsounder - Brooks & Gatehouse
Radar - 36 mile Furuno
Log-Speedometer
Wind Speed and Direction - Brooks & Gatehouse
Computer
Navigation Center
Autopilot - Simrad Robertson
Radio
Compass - Danforth
CD Player
GPS - 2 Systems
VHF

Sails

Fully Battened Mainsail - and Mizzen by Hood
Spinnaker
Genoa - 2006 Banks
Furling Genoa - System by Hood

Rigging

Steering Wheel

Inside Equipment

Electric Bilge Pump - Three
Oven
Manual Bilge Pump
Marine Head
Refrigerator
Deep Freezer

Electrical Equipment

Shore Power Inlet
Generator
Inverter

Outside Equipment/Extras

Teak Cockpit

Additional Information and Photos

Teak Sidedecks
Cockpit Cushions
Cockpit Table
Swimming Ladder

Dimensions

LOA: 67 ft 0 in
Beam: 15 ft 7 in
LWL: 51 ft 0 in
Length on Deck: 62 ft 0 in
Maximum Draft: 10 ft 6 in
Displacement: 120000 lbs
Headroom: 6 ft 3 in

Engine

Engine/Fuel Type: Diesel

Single 170hp Detroit 4 cylinder diesel, Morse engine controls. Engine has an Engine Hour Meter. The bronze Luke propeller has a 2" stainless steel shaft and is square.

ENCHANTA's max cruising speed is 7 knots.

Construction

Built in 1953 by the Abeking & Rasmussen yard in Germany of Corten steel with an iron structural keel. White Awlgrip finished topsides, black boottop and black bottom paint. Teak 16x10 oval, self-bailing cockpit. Teak deck. Teak deck joinerwork.

ENCHANTA comes with a CAPAC system for cathodic corrosion protection of her steel hull. A constant protection level is maintained by an electronically controlled system.

Accommodations

Sleeps 12 in 4 double berths and 2 queens. There are 2 heads, the one just forward of the master stateroom has an enclosed shower. The pressure water system has a 25 gallon hot water tank. The master stateroom is all the way aft and features one of the queen berths, a wood-burning fireplace, book shelves port and starboard and a comfortable suede settee. The full-width galley is aft of the crew quarters and features 2008 Sea Frost refrigeration and freezer as well as a

Additional Information and Photos

Shipmate LP-gas stove. The folding dining table is located in the main saloon and will seat 6 to 8 guests comfortably. Additionally, in the main saloon, there is a second wood-burning fireplace. The interior finishes are teak (saloon), black walnut (master stateroom) and mahogany in the galley. ENCHANTA is well ventilated by way of 9 chromed bronze circular hatches which sit in the teak deck, opening to 45 degrees and revolving 360 degrees. There are also 9 opening ports as well as screens.

Tankage

Steel fuel tank has a capacity of 960 gallons, bronze water tank will hold 450 gallons. Plastic 25 gallon holding tank.

Electrical

12V starting voltage, 110, 12 and 32 volt lighting voltage. The engine alternator is a 32V 50 amp system with four 8V and two 12V batteries. The electrical panel is circuit breakers. ENCHANTA has a 1986 17kw Northern Lights Auxiliary generator, shore power hook-up, charger, polarity indicator, master switch, battery condition indicator and a Heart Interface Converter.

Sails and Rigging

The sail inventory for ENCHANTA includes a 2006 Banks Genoa, Hood mizzen and main, Hood mizzen staysail, Hood staysail and Hood MP spinnaker. Jib roller furling system is by Hood. The boat is yawl rigged with aluminum rigging material, stainless turnbuckles. Keel stepped mast with 87' fair draft. Hollow aluminum spars finished with Awlgrip. All 6 halyard winches are Barient and there are 4 Barient sheet winches and 1 Coffee Grinder.

Ground Tackle

75# CQR and 75# Danforth anchors with chain and 200' rode. The electric windlass is an Ideal.

Equipment

ENCHANTA's numerous pieces of equipment include a bilge blower, CO2 system, a gas fume detector, 3 electric bilge pumps and one Edson manual pump, a bell, compressor type horn, flares, 2 self-inflatable and ten traditional orange life preservers, one horseshoe ring, a strobe, two searchlights. There are many docking lines, a boathook, 10 to 12 fenders, spreader lights on both the main and mizzen, a Man Overboard pole and EPIRB. Also included in the equipment inventory are a boarding ladder, sail covers, bow pulpit, stern rail, lifelines, cockpit awning, dinghy, sailing rig, davits, an inflatable and berth cushions. The extensive collection of blankets, pillows, dishes,

Additional Information and Photos

flatware, glassware and cooking utensils will be included as will tools and a winter cover, new in 2008.

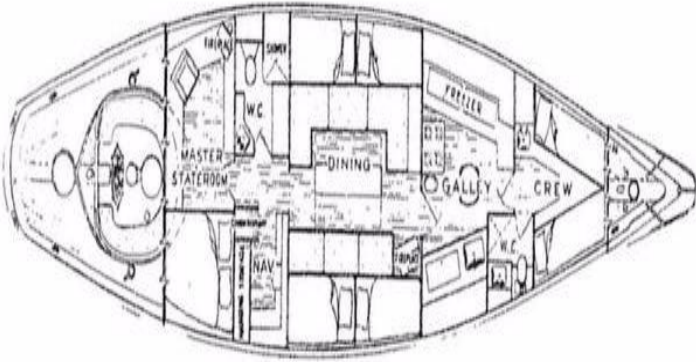
Electronics and Navigation

The nav station, which is aft of the main saloon, is well equipped with a Weems & Plath Recording Barometer, a Weems & Plath Brass Chronometer, a Danforth Compass, 2 VHF radios, a chromed bronze binnacle, 36 mile Furuno radar, Simrad Robertson autopilot. The depth sounder is a Brooks & Gatehouse with speed and wind indicator and water temperature guage. There are two GPS systems, a Windex masthead wind indicator, a speed log, am/fm radio cassette player, CD player, computer and charts.

Disclaimer

The Company offers the details of this vessel in good faith but cannot guarantee or warrant the accuracy of this information nor warrant the condition of the vessel. A buyer should instruct his agents, or his surveyors, to investigate such details as the buyer desires validated. This vessel is offered subject to prior sale, price change, or withdrawal without notice.

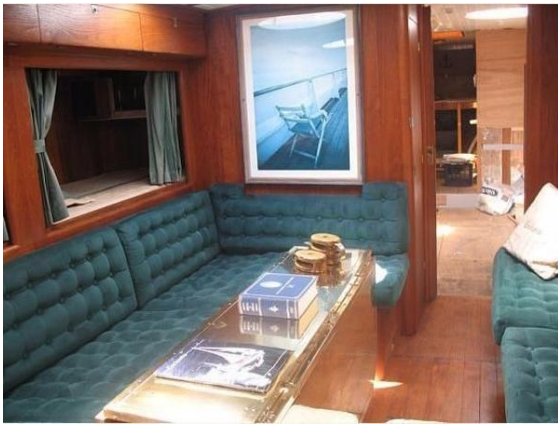
Additional Information and Photos



Additional Information and Photos



Additional Information and Photos



Additional Information and Photos

